

# AVANT™ A2D+ Audiometer

## Compact PC-Based Diagnostic Audiometer

The AVANT A2D+ Is A Powerful Dual Channel Audiometer Featuring Integrated Quick SIN™ Testing Capability



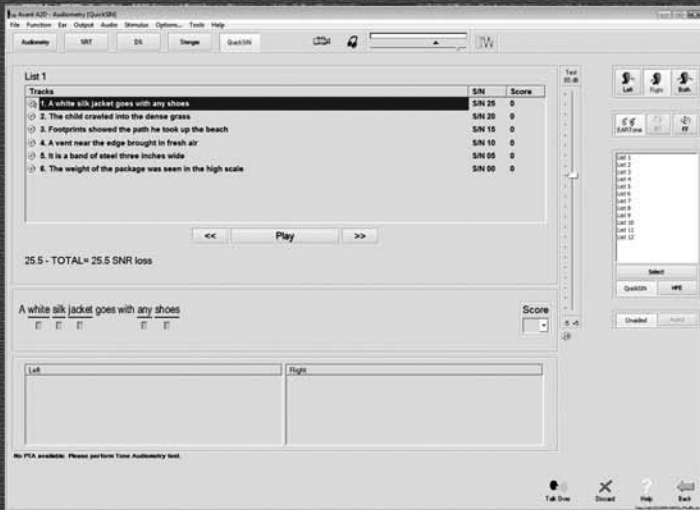
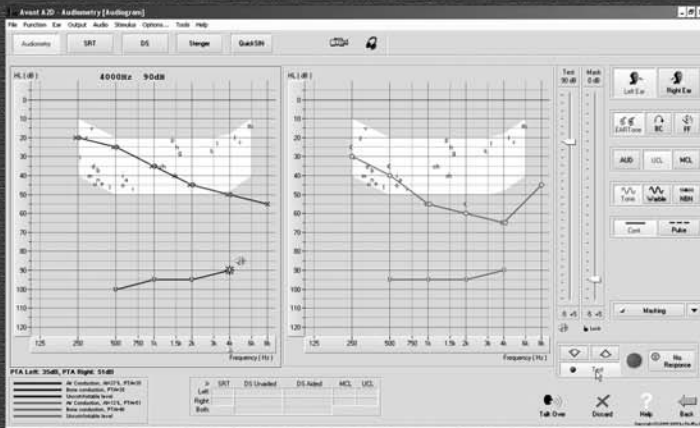
Approx. Size:  
5" x 5" x 1.25"

# MedRx®

[www.medrx-usa.com](http://www.medrx-usa.com) or Call Toll Free: 888-392-1234

# AVANT A<sup>2</sup>D<sup>+</sup> Audiometer

Dual Channel, Air, Bone & Speech Audiometer



- **Integrated Quick SIN™ Testing Capability Available**
- **Dual Channel**
- **Air, Bone & Speech Functions**
- **PC Based Via USB Connection**
- **Insert Earphones or TDH-39 Headset**
- **Patient Response Switch**
- **Ergonomic Design Available In White**
- **NOAH™, Sycle.Net & TIMS® Compatible**

**The AVANT™ A<sup>2</sup>D<sup>+</sup> Diagnostic Audiometer is a compact, dual channel, air, bone and speech testing system**



A2DP-S-ADH107-2

## MedRx

[www.medrx-usa.com](http://www.medrx-usa.com)

1200 Starkey Rd. #105,

Largo, FL 33771

Toll Free 888-392-1234

727-584-9600 • Fax: 727-584-9602

MedRx's Authorized Representative in Europe  
(Regulatory affairs only) Emergo Europe • Molenstraat 15  
2513 BH The Hague • The Netherlands  
Tel: (31) (0) 70 345-8570 • Fax: (31) (0) 70 346-7299